



01234 345353
Residential Sales & Lettings

To Rent

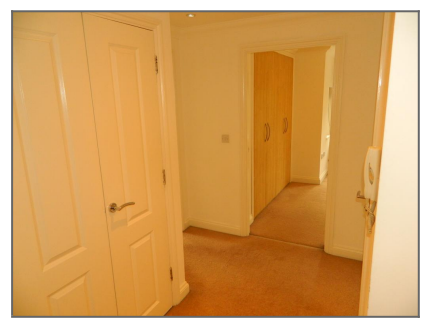
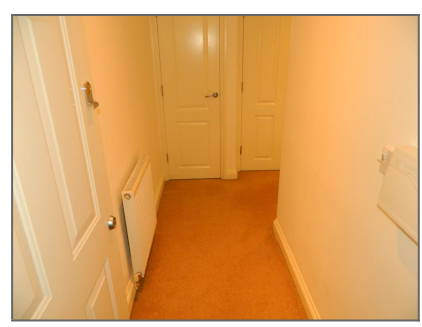
Victoria Road, Bedford MK42 9BZ



£650 per month

1 bedroom Flat

- ✓ Modern Top Floor Flat
- ✓ Spacious Lounge/Dining Room
- ✓ Kitchen With Integrated Appliances
- ✓ One Double Bedroom
- ✓ Fitted Wardrobes
- ✓ Bathroom With Shower Over Bath
- ✓ Allocated Parking
- ✓ Walking Distance To South Wing Hospital





01234 345353
Residential Sales & Lettings

Description

**** AVAILABLE NOW ** VIDEO TOUR AVAILABLE.** We are pleased to offer this purpose built, well presented flat located within walking distance of South Wing Hospital. The accommodation on offer comprises Entrance Hall With 2 Useful Storage Cupboards, Spacious Lounge/Dining Room, Kitchen With All Appliances, One Double Bedroom With Fitted Wardrobes & Bathroom With Shower Over Bath. Outside There Is Allocated Parking For One Car. The Property Benefits From Double Glazed Sash Windows & Gas Central Heating.

AVAILABLE NOW
UN-FURNISHED
NO PETS



Lounge



Kitchen



Kitchen



Bedroom



01234 345353
Residential Sales & Lettings



Bedroom



Bathroom

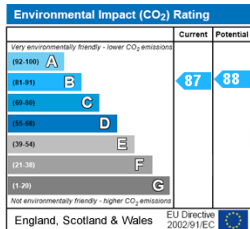
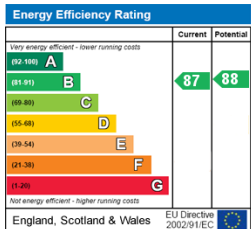


Car Park



01234 345353
Residential Sales & Lettings

Energy Efficiency and Environmental Impact



Disclaimer: These particulars are thought to be materially correct though their accuracy is not guaranteed and they do not form part of any contract. All measurements are approximate and we have not tested any fitted appliances, electrical or plumbing installation or central heating systems.

