



01234 345353
Residential Sales & Lettings

To Rent

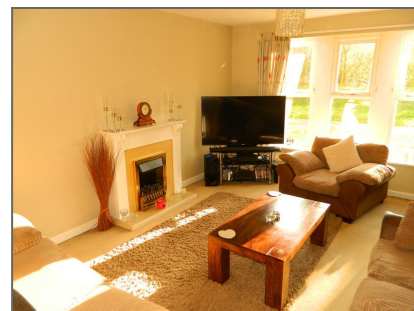
Gillespie Close, Bedford MK42 9JQ



£675 per month

2 bedroom Flat

- ✓ Modern Ground Floor Flat
- ✓ Spacious Lounge/Dining Room
- ✓ Kitchen With Cooker & Washing Machine
- ✓ Two Bedrooms
- ✓ Three Piece Bathroom
- ✓ Parking to The Rear
- ✓ Walking Distance To South Wing Hospital
- ✓ AVAILABLE BEG FEBRUARY





01234 345353
Residential Sales & Lettings

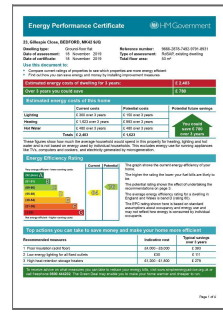
Description

**** AVAILABLE BEG FEBRUARY **** We are pleased to offer this modern ground floor flat located within walking distance to the Town Centre and South Wing Hospital. The accommodation on offer comprises Entrance Hall, Spacious Lounge/Dining Room, Two Bedrooms, One Double & One Single, Kitchen With Cooker & Washing Machine And Three Piece Bathroom. Outside There Is Parking To The Rear. The Property Will Have A New Kitchen Fitted, New Flooring & Be Re-Decorated.

AVAILABLE BEG FEBRUARY

UN-FURNISHED

NO PETS



Disclaimer: These particulars are thought to be materially correct though their accuracy is not guaranteed and they do not form part of any contract. All measurements are approximate and we have not tested any fitted appliances, electrical or plumbing installation or central heating systems.